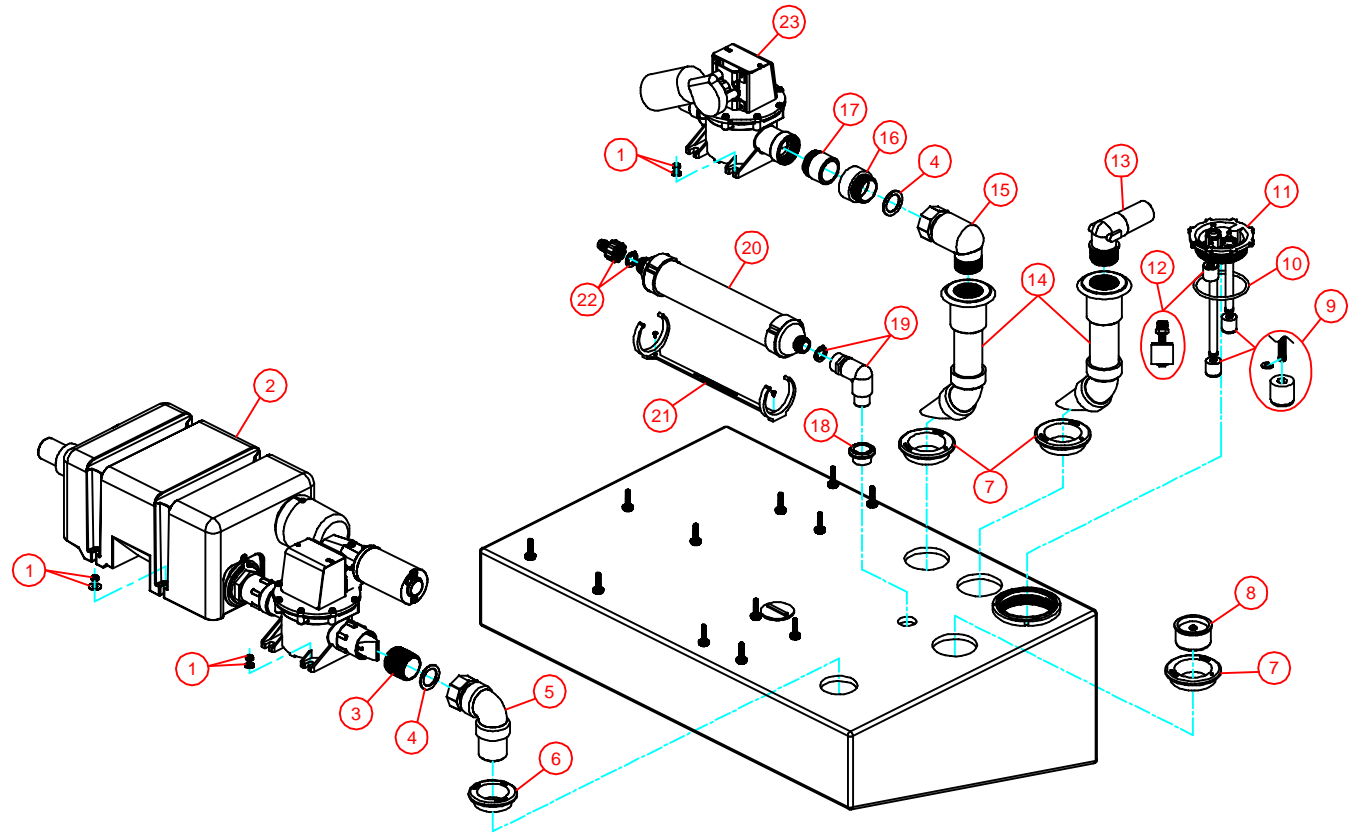


# PARTS LIST: MODEL 322722812 & 322722824

ITEM	PART NO.	DESCRIPTION
1	385310939	KIT, COM'P MTG INSERT HD TANK
2	317773012	VGLP/W12 REAR INLET
	317773024	VGLP/W24 REAR INLET
3	388640366	NIPPLE, 1-1/2" CLOSE
4	385311233	KIT, SLIP SEAL 1-1/2" REPL
5	385311092	KIT, QUICK CONNECT ELBOW (INC. ITEM 4 & 6)
6	385311111	GROMMET, SEALING 1 1/2"
7	385311110	GROMMET, SEALING 2"
8	313255247	TANK SAVER, 1- 1/2" (INC. ITEM 9)
9	385311103	KIT, FLOAT AND RING LOCK
10	385311250	KIT, TW CAP ORING REPL
11	313000355	CAP (INCLUDES ITEM 10)
12	385230268	FLOAT/STEM (THREADED)
13	385311233	KIT, 90° ELBOW FITTING
14	385310660	KIT, DIPTUBE (INC. ITEM 7)
15	385310931	QUICK CONNECT ELBOW
16	307341425	ADAPTER, 1-1/2" HUB X MPT
17	385640335	KIT, S-SUMP INLET TANK TO PUMP
18	385311112	KIT, SEALING GROMMET 3/4"
19	385311091	VENT ELBOW INLET 3/4" (INC. ITEM 18)
20	309310001	REPLACEMENT VENT FILTER
21	385311106	VENT FILTER MTG. BRACKET (INC. SCREWS)
22	385310135	FILTER INSTALLATION
23	317301200	T-PUMP 12VDC
	317302400	T-PUMP 24VDC



Dometic Corporation - Sanitation Systems  
 13128 State Rt. 226, P.O. Box 38  
 Big Prairie, OH 44611-0038 USA  
 Telephone: 330-496-3211  
 Fax: 330-496-3097  
 Email: sealand@dometicusa.com